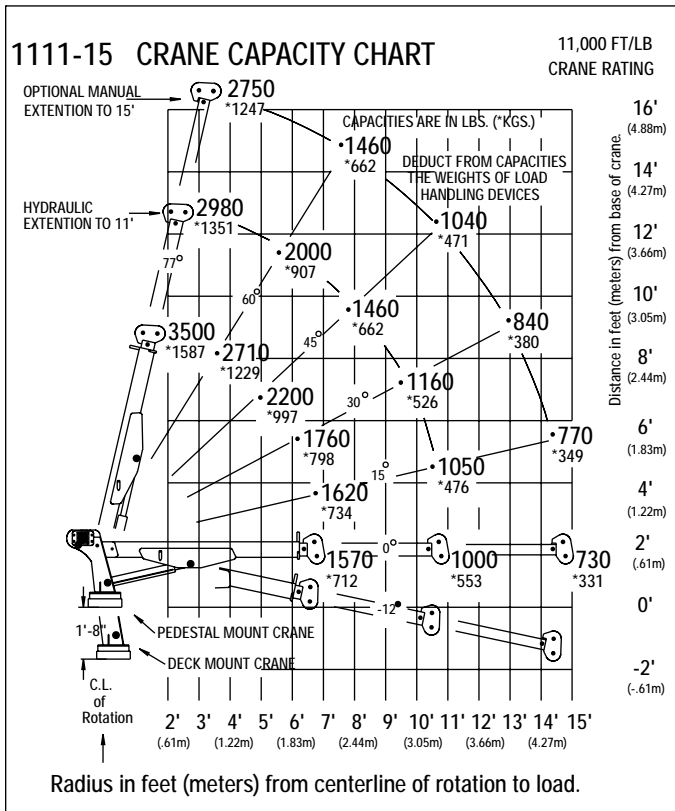


# 3,500 LB. Capacity



### General Crane Performance Specifications

- 11,000 FT/LB Crane rating
- 3,500 lbs. Maximum capacity at 3' from centerline of rotation
- 510 Degrees of rotation
- 77 Degrees to -12 degrees hyd. boom elevation
- Hydraulically extended from 7' to 11' (standard)
- Manually extended from 11' to 15' (optional)

### Winch

- 38:1 Ratio worm gear with brake
- Equipped with 50' of 1/4" cable FW PRF RRL IWRC IPS
- ANSI winch drum
- Hyd. winch powered by a high torque motor

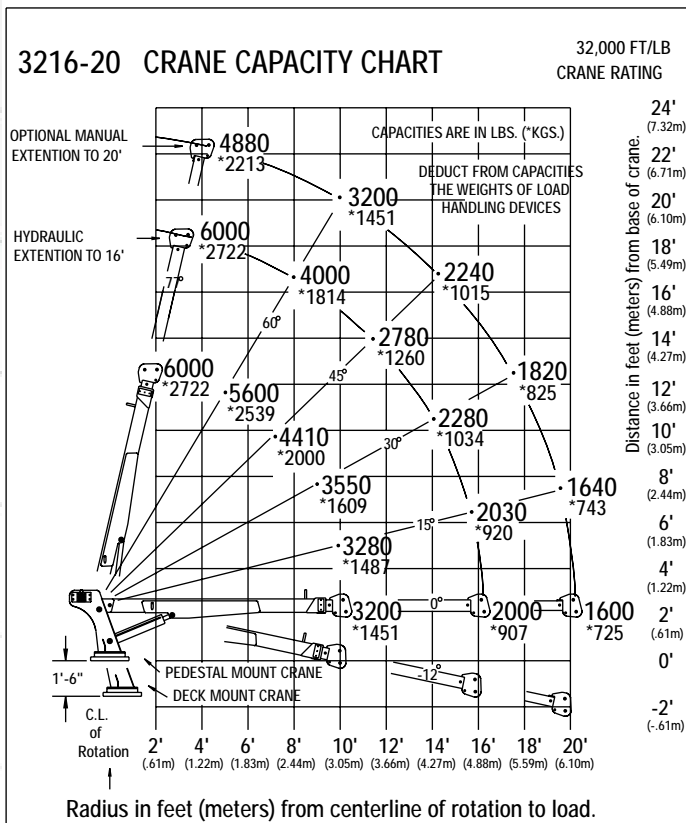
### Rotation

- Turntable slewing ring bearing
- External worm gear drive, 61:1 ratio, self-locking
- Hyd. rotation powered by a high torque motor

### Crane Physical Specifications

- 29" Overall crane height on Short tower cranes and 49" on Tall tower cranes
- Wt. 700 lbs. on Short tower & 720 lbs. on Tall tower
- Add 60 lbs. for 4' manual ext. from 11'-15'
- 15" x 8" bolt down pattern
- 19.5" x 17" mounting space required
- Mounting requires (4) 3/4-10 GRD-8 bolts, minimum
- Hyd. Requirements: 6-8 GPM @2500 PSI

# 6,000 LB. Capacity



### General Crane Performance Specifications

- 32,000 FT/LB Crane rating
- 6,000 lbs. Maximum capacity at 3' from centerline of rotation
- 600 Degrees of rotation
- 77 Degrees to -12 degrees hyd. boom elevation
- Hydraulically extended from 10' to 16' (standard)
- Manually extended from 16' to 20' (optional)

### Winch

- 38:1 Ratio worm gear with brake
- Equipped with 75' of 5/16" cable FW PRF RRL IWRC IPS
- ANSI winch drum
- Hyd. winch powered by a high torque motor

### Rotation

- Turntable slewing ring bearing
- External worm gear drive, 85:1 ratio, self-locking
- Hyd. rotation powered by a high torque motor

### Crane Physical Specifications

- 37" Overall crane height on Short tower cranes and 55" on Tall tower cranes
- Wt. 1,150 lbs. on Short tower & 1,180 lbs. on Tall tower
- Add 140 lbs. for 4' manual ext. from 16'-20'
- 16.5" x 12" bolt down pattern
- 21" x 21" mounting space required
- Mounting requires (4) 7/8-9 GRD-8 bolts, minimum
- Hyd. Requirements: 6-8 GPM @2500 PSI

## Standard Features:

- = Clean design with minimal exposed hoses, fittings, wiring and cylinders
- = Internally mounted crane overstress system
- = Internally mounted load holding valves on all cylinders... no external plumbing
- = Electric over hydraulic controls with closed center load sensing power package
- = Remote control, high impact low temperature plastic head with heavy duty 25' umbilical cord
- = Cranes equipped with anti-two block device

## Optional Equipment:

- = Short or tall tower to suit customer preference
- = Live swivel hooks
- = Crane proportional control
- = Engine start/stop control on remote
- = Wireless remote control
- = Open center in lieu of closed center hydraulics
- = Manual or hydraulic up and down or hydraulic in & out (crane side only) outrigger packages

