



Maintainer

www.maintainer.com

FULL LINE



1701 South 2nd Avenue
PO Box 349
Sheldon, IA 51201
800-831-8588

F-05-09

About Us	1
One-Ton Service Bodies	2-3
Two-Ton Service Bodies	4-5
Body Lengths	6-7
Signature Series	8-11
Signature Select Series	12-15
Lube Bodies	16-17
Single & Tandem Axle Bodies	18-19
One-Ton Combo Bodies	20-21
Two-Ton Combo Bodies	22-23
Custom Bodies	24-25
Maintainer Cranes	26-27
1115 & 3216-20 Cranes	28-29
6000 & 8000 Series Crane	30-31
10000 & 11000 Series Cranes	32-33
12000 & 14000 Series Cranes	34-35
Crane Lifting Capacities	36-37
Accessories & Options	38-39

Maintainer is a manufacturer and marketer of high quality, value-based products for work trucks. We are a dynamic organization dedicated to exceeding our customer's expectations by being responsive, efficient, and committed to continuous improvement throughout the organization.

Markets served:

- Construction
- Equipment Dealers
- Utility/Government
- Railroad
- Mining
- Logging
- Rental
- Agricultural
- Gas & Propane
- Manufacturing
- Other



Designed and built to meet your needs.



1-Ton Service Body Only
(84" CA, shown with 11' body & work bench bumper)



1-Ton Service Body w/1115ST Crane
(60" CA, shown with 9' body & step bumper and manual outriggers)



1-Ton Service Body w/6000TT Series Crane
(84" CA, shown with 11' body & workbench bumper and hydraulic outriggers)



1-Ton Service Body w/8000TT Series Crane
(84" CA, with 11' body, workbench bumper & hydraulic outriggers)

Maintainer service bodies are built to meet the most rugged on/off road conditions. Maintainer specializes in custom designed bodies that meet the highest quality standards.

- 12 GA. A60 galvanized construction to resist corrosion
- 3/16" thick Aluminum doors
- Reinforced cabinet floor w/ clean-out drains
- 3-point D-ring door latches w/ gas spring door holders
- Fully adjustable shelving
- 49" Wide center deck overlaid with deck plating
- 10" Swing-down tailgate
- 12" Deep, full body width, step bumper w/ 2" square class IV hitch receiver (1,500 lb. vert & 10,000 lb. MGTW), 7-prong flat blade (RVstyle) trailer plug
- Fuel fill recessed into body side rail
- All bodies primed and undercoated
- I.C.C. round recessed LED lights, reflectors, mud flaps, rear body grab handle, and back up alarm
- Mini I.C.C. safety kit - 2 1/2 lb. ABC fire extinguisher & hazard reflectors
-

Chassis For One-Ton Units:

- Minimum 15,000 GVWR for body only
- Minimum 17,950 GVWR for body with crane

EZ Pick Crane	2,000 lb. capacity
1115 Crane	3,500 lb. capacity
3220 Crane	6,000 lb. capacity
6000 Series	6,350 lb. capacity
8000 Series	8,600 lb. capacity

Contact factory to verify adequate GVWR which can vary depending on equipment, options selected and payload added by the user

Optional Features see pages 38-39



2-Ton Service Body Only (120" CA)



2-Ton Service Body w/10000ST Series Crane (84" CA)



2-Ton Service Body w/12000TT Series Crane (120" CA)



2-Ton Service Body w/12000TT Series Crane with welder platform (120" CA)



2-Ton Tandem Service Body w/12000TT Series Crane (159" CT)

- 12 GA. A60 galvanized construction to resist corrosion
- 3/16" thick aluminum doors
- Reinforced cabinet floor w/ clean-out drains
- 3-point D-ring door latches w/ gas spring door holders
- Fully adjustable shelving
- 49" Wide center deck overlaid with deck plating
- 10" Swing-down tailgate
- 12" Deep, full body width, step bumper w/2" square class IV hitch receiver (1,500 lb. vert & 10,000 lb. MGTW), 7-prong flat blade (RV style) trailer plug
- All bodies primed and undercoated
- I.C.C. round recessed LED lights, reflectors, mud flaps, and rear body grab handle, backup alarm
- Mini I.C.C. Safety kit - 2 1/2 lb. ABC fire extinguisher & hazard reflectors

Chassis For Two-Ton Units:

- Minimum 22,500 GVWR

Crane Options with Two Ton Bodies:

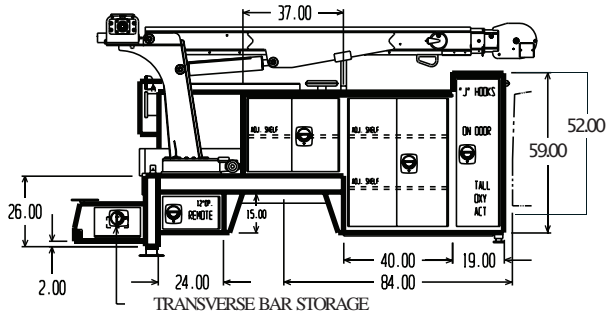
EZ Pick Crane	2,000 lb. capacity
1115 Crane	3,500 lb. capacity
3220 Crane	6,000 lb. capacity
6000 Series	6,350 lb. capacity
8000 Series	8,600 lb. capacity
10000 Series	10,000 lb. capacity
11000 Series	11,000 lb. capacity
12000 Series	12,000 lb. capacity
14000 Series	14,000 lb. capacity

Contact factory to verify adequate GVWR. This can vary depending on equipment, options picked and payload added by the user

Optional Features see pages 38-39

body lengths

One Ton Service Bodies

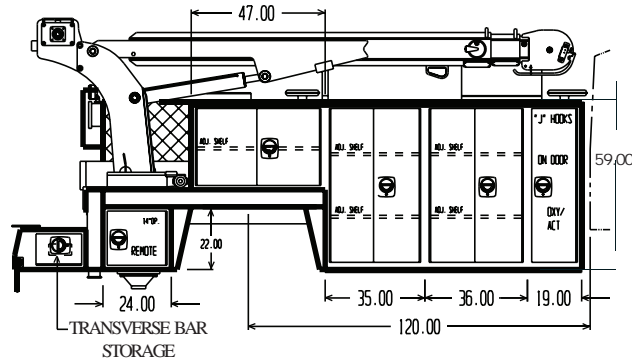


Cab to axle
Recommended
Chassis
Cranes available

60-120 (84 CA shown)
15,000-26,000 GVWR
EZ Pick Crane
1115 Crane
3216-3220 Crane
6000 Series Crane
8000 Series Crane

Contact factory for other variations.

Two Ton Service Bodies

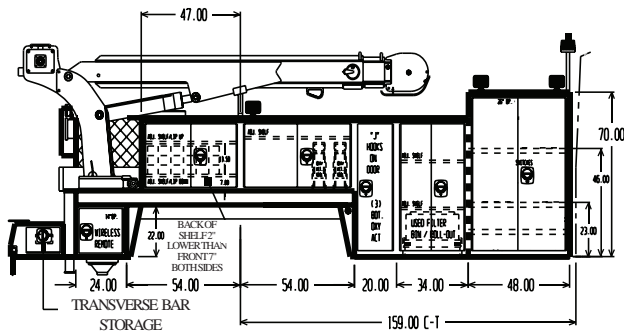


Cab to axle
Recommended
Chassis
Cranes available

84-larger (120 CA shown)
22,500-33,000 GVWR
EZ Pick Crane
1115 Crane
3216-3220 Crane
6000 Series Crane
8000 Series Crane
10000 Series Crane
11000 Series Crane
12000 Series Crane
14000 Series Crane

Contact factory for other variations.

Two Ton Service Bodies with Tandem Axle



Cab to center of
tandem
Recommended
Chassis
Cranes

120-larger
(159 C-TA shown)
46,000-64,000 GVWR
EZ Pick Crane
1115 Crane
3216-3220 Crane
6000 Series Crane
8000 Series Crane
10000 Series Crane
11000 Series Crane
12000 Series Crane
14000 Series Crane

Contact factory for other variations.



Signature Series 1



Signature Series 2



Signature Series 3



Signature Series 4



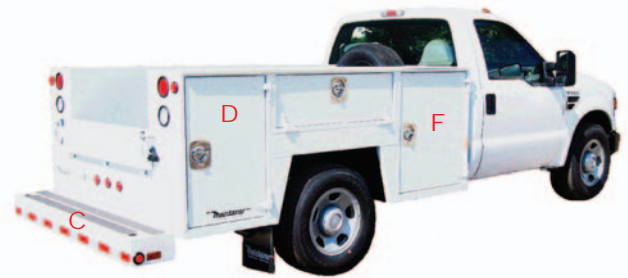
Signature Series 5

- Planetary winch in lieu of worm gear on crane
- Radio-wireless crane remote control, includes engine start-stop, engine speed control, proportional control and ship along 33' cable for backup
- Jump start system-12/24 volt w/cables
- 18 Drawer small parts bins
- Removable divider panel in center deck
- Pintle hitch and receiver bracket
- Rear bumper tow hooks
- Vise/grinder removable mounting plate
- 5" Wilton vise
- Chain hanger bracket
- Welder face cut-out in compartment back wall w/ drip pan and "J" hooks (not available for Signature 5)
- Additional EZ Latch Aluma Drawers

List of options for Signature 4 Lube:

- Jump start system-12/24 volt w/cables
- EZ Latch Aluma Drawers
- Generators
- Parts Washer
- Pressure Washer
- Filtration System

Meets OSHA 1910.180 requirements and ASME B30.5 safety standards.



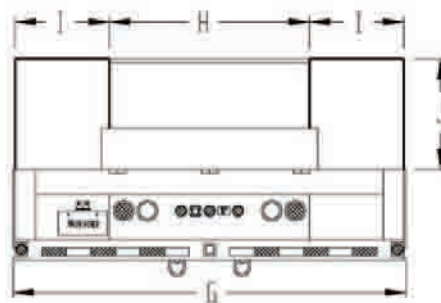
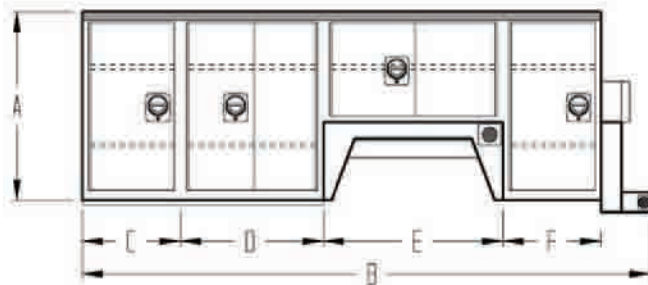
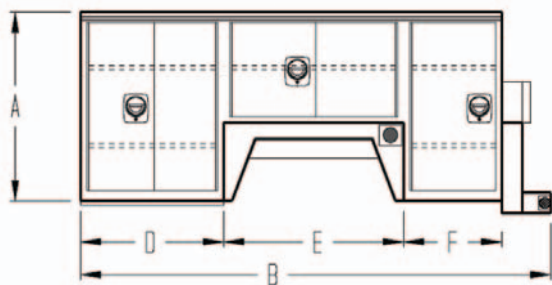
A	Pedestal Crane 16,000 or 36,000 ft. lb. maximum capacity (optional)
B	Outriggers Manual out and down (optional)
C	Bumper Bolt-on Step Bumper (optional)
D	Doors All aluminum, one-piece construction, heavy-duty stainless steel hinges, three point D-ring door latches, gas spring door holders
E	Lights LED ICC lighting (standard), LED interior and exterior lighting (optional)
F	Compartments Infinately adjustable shelving (standard), multiple drawer set options, reinforced cabinet floors with clean-out drains, 1/8" 5052-H32 with Aluminum bodies or 14 ga. A60 grade Galvanneal® with steel bodies
G	DuraBed® Spray-on, non-skid protective covering (optional)

A56S	A60S	A60D	A84D	S60D	S84D
				√	√
				√	√
√	√	√	√	√	√
√	√	√	√	√	√
√	√	√	√	√	√
√	√	√	√	√	√
√	√	√	√	√	√



MODEL	MATERIAL
A56S	Aluminum
A60S	Aluminum
A60D	Aluminum
A84D	Aluminum
S60D	Galvanneal Steel
S84D	Galvanneal Steel

WEIGHT	CHASSIS	CAB TO AXLE
575 lbs	Single	56 in.
650 lbs.	Single	60 in.
800 lbs.	Dual	60 in.
875 lbs.	Dual	84 in.
1750 lbs.	Dual	60 in.
2100 lbs.	Dual	84 in.



MODEL	A	B	C	D
A56S	46"	111"	N/A	31"
A60S	46"	115"	N/A	35"
A60D	46"	115"	N/A	35"
A84D	46"	139"	24"	35"
S60D	46"	115"	N/A	35"
S84D	46"	139"	24"	35"

E	F	G	H	I
44"	24"	82"	49"	16"
44"	24"	82"	49"	16"
44"	24"	96"	49"	23"
44"	24"	96"	49"	23"
44"	24"	96"	49"	23"
44"	24"	96"	49"	23"



Lube Bodies For Chassis With Single, Tandem, Triple, Tag or Push Axles:

Features:

- Corrosion resistant 12-GA galvanized A60 construction, including body shell bulkhead, wheel skirting and all exterior sheeting
- 3/16" Single piece aluminum doors
- Doors are single piece construction to avoid water traps
- 3-point D-ring door latches / gas spring door holders
- Corrosion resistant undercoated underbody w/ reinforcements and drain plugs
- I.C.C. round LED recessed lights, reflectors, mud flaps and rear body grab handle
- Units accommodate fuel, oil, grease, anti-freeze, water, and evac systems
- Filtered caps with guard (see photo ❶)
- Spring mounted product tanks (see photo ❷)

Options:

- Open center deck with either open or enclosed rear reel compartment
- Fully insulated van bodies
- Aluminum roll-up or hinged doors
- Underbody and above deck storage
- Interior and exterior lighting
- Access steps to tanks & bodies (see photo ❸)
- Square or oval fuel tanks (see photo ❹)
- Emergency fuel shut-offs in three locations (see photo ❺)
- Rear reel or side pump compartment, provides easy service (see photo ❻)
- Used filter bins and EZ Latch Aluma Drawers (see photo ❼)

single axle lube bodies

tandem axle lube bodies



1-Ton Lube Body (side pump & rear reel access)



1-Ton Lube Body (rear pump & reel access)



2-Ton Lube Body (rear pump & reel access)



2-Ton Lube Body w/Oval Tank (rear pump & reel access)



2-Ton Tandem Lube Body w/Oval Fuel Tank
(rear pump & reel access)



2-Ton Tandem Lube Body (rear pump & reel access)



2-Ton Tandem Lube Van Body (reel access out driver's side)

Lube bodies come with air or hydraulic product distribution systems.

Whatever your lube needs, Maintainer can help create a custom package that exactly meets your needs.

one-ton combo bodies



1-Ton Service Combo Body w/3220TT Crane



1-Ton Service Combo Body w/1115ST Crane



1-Ton Service Combo Body w/3220TT Crane



Maintainer combo bodies are like two trucks in one. Whether it's mechanical repairs or lube service, Maintainer combos can be customized to meet your needs.

More Optional Features shown on pages 38-39

Contact factory on GVWR requirements.

two-ton combo bodies



2-Ton Service Combo Body w/6000ST Crane



2-Ton Service Combo Body w/8000TT Crane



2-Ton Service Combo Body w/8000ST Crane



2-Ton Service Combo Body w/1115ST Crane



More Optional Features shown on pages 38-39

Contact the factory on GVWR requirements.



From Concept and Design.....to The Finished Product.



Lube Unit With
Engineered Plastic Tank Option



Various Layouts to Meet Specific Needs



Railroad Application Shown



Cranes on Either Street or Curb Side



Sign Trucks

Designed and built to meet your needs with heavy duty construction that stands up to the rigors of the most demanding jobs. Premium components match our top quality designed and built products. From initial spec and quote, throughout the design process, and service after the sale, we are with you every step of the way with our full customer service package.



Cranes:

EZ Pick Crane	(2,000 lb. capacity)
1115 Crane	(3,500 lb. capacity)
3220 Crane	(6,000 lb. capacity)
6000 Series	(6,350 lb. capacity)
8000 Series	(8,600 lb. capacity)
10000 Series	(10,000 lb. capacity)
11000 Series	(11,000 lb. capacity)
12000 Series	(12,000 lb. capacity)
14000 Series	(14,000 lb. capacity)

ez pick crane

Features:

- 2,000 lb. lift capacity
- 2'-7' manual extend

Winch:

- Electric 12-volt winch with dynamic motor brake and mechanical friction brake
- Equipped with 50' of 3/16" cable
- Maximum 70 amp draw under full load
- 10' remote control Swivel block with hook and latch



Rotation:

- 12-volt electric swing with 430° rotation and self-locking stop through a sealed ball bearing slewing ring

Crane Physical Specifications:

- Lightweight design-268 lbs.
- Easy mount 8" square hole pattern with 10" square mounting space requirement
- Optional mounting plate and manual outrigger



Short tower crane shown

Features:

- Available in short or tall tower
- 3,500 lb. Lift capacity @ 3' from center line of rotation
- 11' Hydraulic reach
- 11'-15' Manual extend
- Tall tower crane pedestal design (short tower opt.)
- Closed center/load sensing hyd. (open center opt.)

Winch:

- 38:1 Ratio worm gear winch with brake
- Equipped with 70' of 1/4" cable
- ASME B30.5 winch drum
- Hydraulic high torque winch motor

Rotation:

- Turntable slewing ring bearing
- External worm gear drive, 61:1 ratio, self-locking
- Hydraulic rotation powered by a high torque motor
- 510 Degrees of hydraulic rotation

Crane Physical Specifications:

- 29" Overall crane height (short tower) and 49" tall tower
- Wt. 700 lbs. short tower and 720 lbs. tall tower
- 16.75" x 20" Mounting space required
- Mounting requires four (4) 3/4-10 (GRD -8) bolts
- Hydraulic requirements 10-12 GPM@2500 PSI

Optional Equipment:

- Wireless remote control (plug & play)



Tall tower crane shown

Features:

- Available in short or tall tower
- 6,000 lb. Lift capacity @ 3' from center line of rotation
- 16' Hydraulic reach (model 3216)
- 16'-20' Manual extend (optional) (model 3220)
- Tall tower crane pedestal design (short tower opt.)
- Closed center/load sensing hyd. (open center opt.)
- Quick change load block

Winch:

- 38:1 Ratio worm gear winch with brake
- Equipped with 85' of 5/16" cable
- ASME B30.5 winch drum
- Hydraulic high torque winch motor

Rotation:

- Turntable slewing ring bearing
- Self-locking modular worm drive with spur gear output, 190.4:1 ratio
- Hydraulic rotation powered by a high torque motor
- 600 Degrees of hydraulic rotation

Crane Physical Specifications:

- 37" Overall crane height (short tower) and 55" tall tower
- Wt. 1,150 lbs. short tower and 1,180 lbs. tall tower
- 20" x 25.5" Mounting space required
- Mounting requires four (4) 7/8-9 (GRD -8) bolts
- Hydraulic requirements 10-12 GPM @ 2500 PSI

Optional Equipment:

- Wireless remote control (plug & play)

6000 series crane



Features:

- Available in short or tall tower
- 6,350 lb. Lift capacity @ 6' from center line of rotation
- 24' Hydraulic reach
- Tall tower crane pedestal design (short tower opt.)
- Closed center/load sensing hyd. (open center opt.)
- Quick change load hook for single part line use
- Compact anti-two block design

Winch:

- 38:1 Ratio worm gear winch with brake, 30 feet/min line speed, single
- Equipped with 120' of 3/8" cable
- Hydraulic high torque winch motor

Rotation:

- Turntable slewing ring bearing
- Self-locking modular worm drive with spur gear output, 190.4:1 ratio
- Hydraulic rotation powered by a high torque motor
- 615 Degrees of hydraulic rotation

Crane Physical Specifications:

- Tall tower - 60.5" Overall crane height
- Short tower - 41.5 Overall crane height
- Wt. 1875 lbs. (850 KGS.)
- 27.25" x 20" Mounting space required
- Mounting requires eight (8) 7/8-9 (GRD -8) bolts
- Hydraulic requirements 12-14 GPM@3000 PSI

Optional Equipment:

- Wireless remote control, (plug & play)
- Planetary winch, (bolt on change out) 40.5:1 ratio planetary winch with brake, 60 feet/min. line speed, single

8000 series crane



Features:

- Available in short or tall tower
- 8,600 lb. Maximum lift capacity
- 24' Hydraulic reach
- Tall tower crane pedestal design (short tower opt.)
- Closed center/load sensing hyd. (open center opt.)
- Quick change load hook for single part line use
- Compact anti-two block design

Winch:

- 38:1 Ratio worm gear winch with brake, 30 feet/min. line speed, single
- Equipped with 120' of 3/8" cable
- Hydraulic high torque winch motor

Rotation:

- Turntable slewing ring bearing
- Self-locking modular worm drive with spur gear output, 190.4:1 ratio
- Hydraulic rotation powered by a high torque motor
- 615 Degrees of hydraulic rotation

Crane Physical Specifications:

- Tall tower - 60.5" Overall crane height
- Short tower - 42.5 Overall crane height
- Wt. 2050 lbs. (930 KGS.)
- 29" x 22" Mounting space required
- Mounting requires eight (8) 7/8-9 (GRD -8) bolts
- Hydraulic requirements 12-14 GPM@3000 PSI

Optional Equipment:

- Wireless remote control, (plug & play)
- Planetary winch, (bolt on change out) 40.5:1 ratio planetary winch with brake, 60 feet/min. line speed, single

Both cranes meet OSHA 1910.180 requirements and ASME B30.5 safety standards.

10000 series crane



Features:

- Available in short or tall tower
- 10,000 lb. Maximum lift capacity
- 24' Hydraulic reach
- Tall tower crane pedestal design (short tower opt.)
- Closed center/load sensing hyd. (open center opt.)
- Quick change load hook for single part line use
- Compact anti-two block design

Winch:

- 38:1 Ratio worm gear winch with brake, 30 feet/min. line speed, single
- Equipped with 120' of 3/8" cable
- Hydraulic high torque winch motor

Rotation:

- Turntable slewing ring bearing
- Self-locking modular worm drive with spur gear output, 190.4:1 ratio
- Hydraulic rotation powered by a high torque motor
- 615 Degrees of hydraulic rotation

Crane Physical Specifications:

- Tall tower - 60.5" Overall crane height (42.5 short tower)
- Wt. 2075 lbs. (941 KGS.)
- 29" x 22" Mounting space required
- Mounting requires eight (8) 7/8-9 (GRD -8) bolts
- Hydraulic requirements 12-14 GPM@3000 PSI

Optional Equipment:

- Wireless remote control, (plug & play)
- Planetary winch, (bolt on change out) 40.5:1 ratio planetary winch with brake, 60 feet/min. line speed, single

11000 series crane



Features:

- Available in tall tower only
- 11,000 lb. Maximum lift capacity
- 24' Hydraulic reach
- Tall tower crane pedestal design (short tower opt.)
- Closed center/load sensing hyd. (open center opt.)
- Quick change load hook for single part line use
- Compact anti-two block design

Winch:

- 42:1 Ratio worm gear winch with brake, 30 feet/min. line speed, single
- Equipped with 125' of 1/2" cable
- Hydraulic high torque winch motor

Rotation:

- Turntable slewing ring bearing
- Self-locking modular worm drive with spur gear output, 190.4:1 ratio
- Hydraulic rotation powered by a high torque motor
- 615 Degrees of hydraulic rotation

Crane Physical Specifications:

- 60.5" Overall crane height
- Wt. 2125 lbs. (964 KGS.)
- 29" x 22" Mounting space required
- Mounting requires eight (8) 7/8-9 (GRD -8) bolts
- Hydraulic requirements 12-14 GPM@3000 PSI

Optional Equipment:

- Wireless remote control, (plug & play)
- Planetary winch, (bolt on change out) planetary winch with brake, 60 feet/min. line speed, single

Both cranes meet OSHA 1910.180 requirements and ASME B30.5 safety standards.

12000 series crane



Features:

- Available in tall tower only
- 12,000 lb. Maximum lift capacity
- 24' Hydraulic reach
- Tall tower crane pedestal design (short tower opt.)
- Closed center/load sensing hyd. (open center opt.)
- Quick change load hook for single part line use
- Compact anti-two block design

Winch:

- 42:1 Ratio worm gear winch with brake, 30 feet/ min. line speed, single
- Equipped with 125' of 1/2" cable
- Hydraulic high torque winch motor

Rotation:

- Turntable slewing ring bearing
- Self-locking modular worm drive with spur gear output, 190.4:1 ratio
- Hydraulic rotation powered by a high torque motor
- 615 Degrees of hydraulic rotation

Crane Physical Specifications:

- 61" Overall crane height
- Wt. 2200 lbs. (998 KGS.)
- 29" x 22" Mounting space required
- Mounting requires eight (8) 7/8-9 (GRD -8) bolts
- Hydraulic requirements 12-14 GPM@3000 PSI

Optional Equipment:

- Wireless remote control, (plug & play)
- Planetary winch, (bolt on change out) planetary winch with brake, 60 feet/min. line speed, single

14000 series crane



Features:

- Available in tall tower only
- 14,000 lb. Maximum lift capacity
- 24' Hydraulic reach
- Tall tower crane pedestal design (short tower opt.)
- Closed center/load sensing hyd. (open center opt.)
- Quick change load hook for single part line use
- Compact anti-two block design

Winch:

- 42:1 Ratio worm gear winch with brake, 30 feet/ min. line speed, single
- Equipped with 125' of 1/2" cable
- Hydraulic high torque winch motor

Rotation:

- Turntable slewing ring bearing
- Self-locking modular worm drive with spur gear output, 190.4:1 ratio
- Hydraulic rotation powered by a high torque motor
- 615 Degrees of hydraulic rotation

Crane Physical Specifications:

- 61" Overall crane height
- Wt. 2230 lbs. (1012 KGS.)
- 29" x 22" Mounting space required
- Mounting requires eight (8) 7/8-9 (GRD -8) bolts
- Hydraulic requirements 12-14 GPM@3000 PSI

Optional Equipment:

- Wireless remote control, (plug & play)
- Planetary winch, (bolt on change out) planetary winch with brake, 60 feet/min. line speed, single

Both cranes meet OSHA 1910.180 requirements and ASME B30.5 safety standards.

crane lifting capacities

**All values in lbs (kgs)*

Reach in Feet (meters)	EZ Pick	1115	3216-20	6000	8000	10000	11000	12000	14000
2 (.61m)	2,000 (907)	3,240 (1470)	6,000 (2722)		-	-	-	-	-
4 (1.22m)	1,625 (737)	2,650 (1202)	5,800 (2631)	6,350 (2880)	8,400 (3810)	9,500 (4309)	10,700 (4853)	12,000 (5443)	14,000 (6350)
6 (1.83m)	1,100 (499)	2,000 (907)	5,100 (2313)	6,350 (2880)	7,500 (3402)	8,000 (3629)	9,333 (4233)	10,666 (4838)	12,333 (5594)
8 (2.44m)		1,460 (662)	4,000 (1814)	4,900 (2223)	6,100 (2767)	6,900 (3130)	7,650 (3470)	8,750 (3969)	10,100 (4581)
10 (3.05m)		1,160 (526)	3,280 (1488)	3,900 (1769)	5,100 (2313)	5,800 (2631)	6,500 (2948)	7,400 (3357)	8,600 (3901)
12 (3.66m)		900 (408)	2,700 (1225)	3,400 (1542)	4,500 (2041)	5,000 (2268)	5,900 (2676)	6,700 (3039)	7,600 (3447)
14 (4.27m)		790 (358)	2,275 (1032)	3,075 (1395)	3,700 (1678)	4,000 (1814)	4,900 (2223)	5,600 (2540)	6,525 (2960)
16 (4.88m)			2,000 (907)	2,800 (1270)	3,200 (1451)	3,500 (1588)	4,100 (1860)	4,700 (2132)	5,350 (2427)
18 (5.59m)			1,800 (816)	2,600 (1179)	2,900 (1315)	3,200 (1451)	3,600 (1633)	4,000 (1814)	5,000 (2268)
20 (6.10m)			1,600 (726)	2,200 (998)	2,500 (1134)	2,800 (1270)	3,200 (1451)	3,800 (1724)	4,400 (1996)
22 (6.71m)				1,900 (862)	2,200 (998)	2,500 (1134)	2,800 (1270)	3,300 (1497)	3,900 (1769)
24 (7.92m)				1,418 (643)	1,687 (765)	1,912 (867)	2,161 (980)	2,521 (1144)	2,970 (1347)



accessories & options

A. 27-175 CFM
Air Compressors



E. Welder/
Generators



B. Welder/Generator
Cut-Out Compartment



F. Small Parts Bins



C. EnPak™



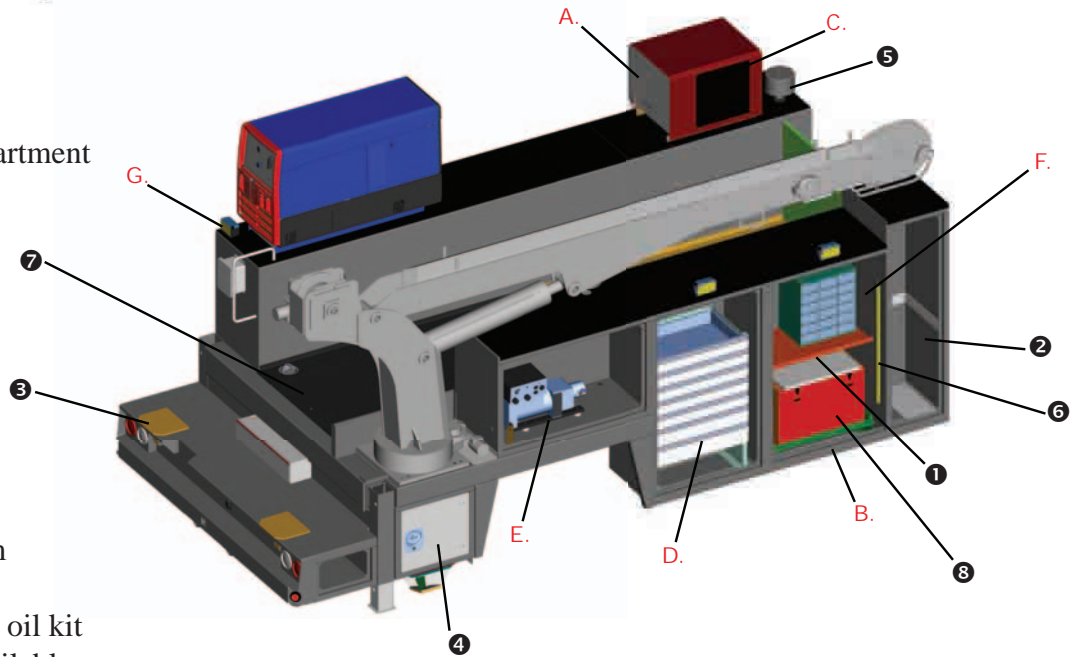
D. 250 lb. EZ
Latch
Aluma Drawers
w/2-way dividers



G. Exterior
Flood Lights



- ① Adjustable shelves
- ② Tall Oxy/Act compartment
- ③ Vise mounts
- ④ Wireless remote
(stored inside compartment)
- ⑤ Pressurized storage
system
- ⑥ Interior LED lights
(inside compartment)
- ⑦ Protective coating
- ⑧ Roll-out used filter
bin (inside compartment)
- Master lock system
- Spare tire rack
- Evac system pump oil kit
- Lube packages available
(cargo area)



Contact the factory for a complete listing of Maintainer options and accessories.