

**Maintainer**

# H7024 CRANE

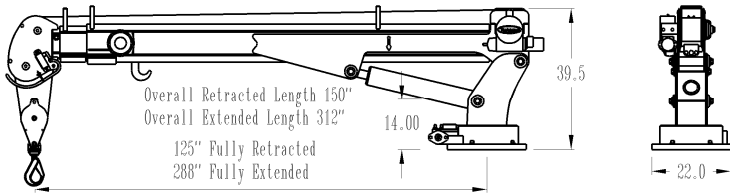


UNLAWFUL TO OPERATE  
THIS EQUIPMENT  
WITHIN 10 FEET OF  
HIGH VOLTAGE LINES OF

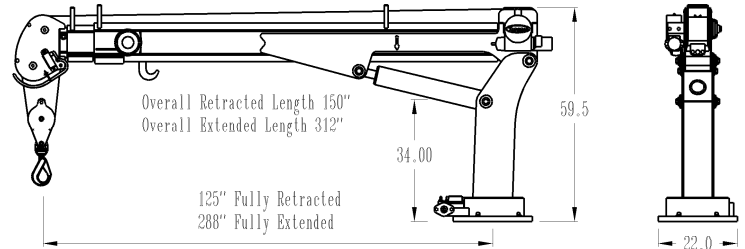
WEIGHT UP  
FROM LOAD

# specifications

## short tower



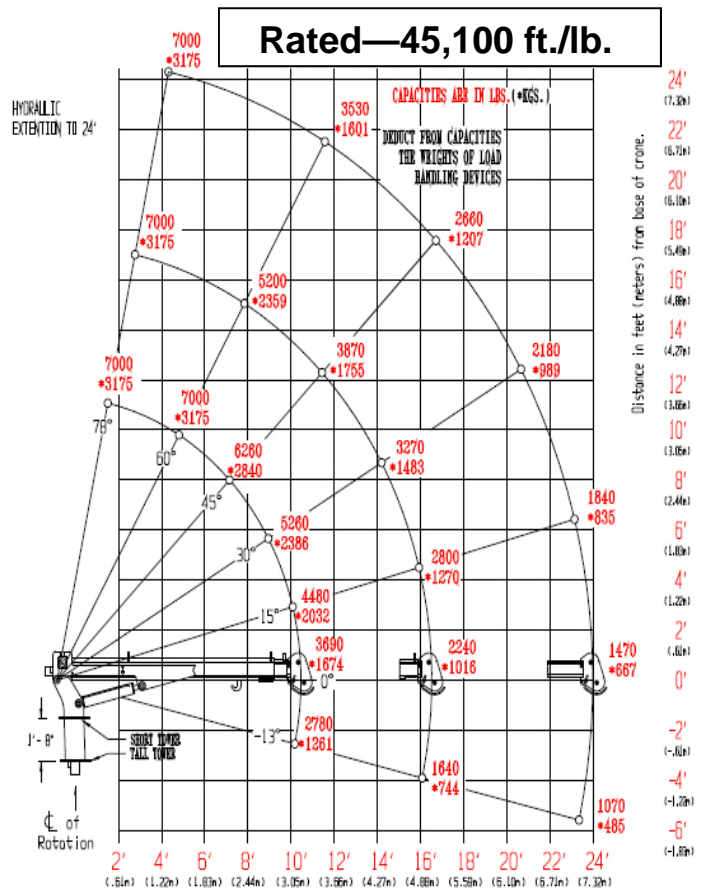
## tall tower



## features

- “Boom Mounted” Gear Winch—30 fpm
- Single Part Line (Dual Part Capable)
- Weight—1,700 lb.
- Total Operational Range 91 deg. (-13 to +78)
- Double Sheave Design
- Anti-Two Block Relocation (Inboard)
- User-friendly Snatch Block Storage
- 120 ft. of 3/8 in dia. Steel Cable
- 615 deg. of Continuous Rotation
- 24 ft. Hydraulic Reach
- Hexagonal Boom
- Tall and Short Tower Configurations
- Closed-center/Load-sensing Hydraulic System
- OSHA 1910.180 / ANSI B30.5 Compliant

## ratings



## options

- Wireless Remote Control System
- Planetary Winch—60 fpm
- Open-center Hydraulic System