

Maintainer

Corporation of Iowa, Inc.

"BEST
BY FAR"

One Ton LP Gas Service Truck



Maintainer's newest model service body has been designed with the propane gas business in mind. The body includes a 6,350 lb. lift capacity crane with 24' feet of hydraulic reach; three compartments: 2 above deck and 1 underbody; 4-roll-out drawers and an 18-drawer small parts cabinet. The cargo area has 6 recessed tie-downs and full length tie-down rails on both sides to keep tanks secure when traveling.

The open cargo area was designed to facilitate loading and unloading of propane tanks and --with 24 feet of hydraulic crane boom extension-- even hard to reach tanks are a snap. Our rear crane mount also makes trailer loading easy.

Contact the Maintainer dealer nearest you for further details. We have a wide range of bodies, cranes and accessories to meet your needs.

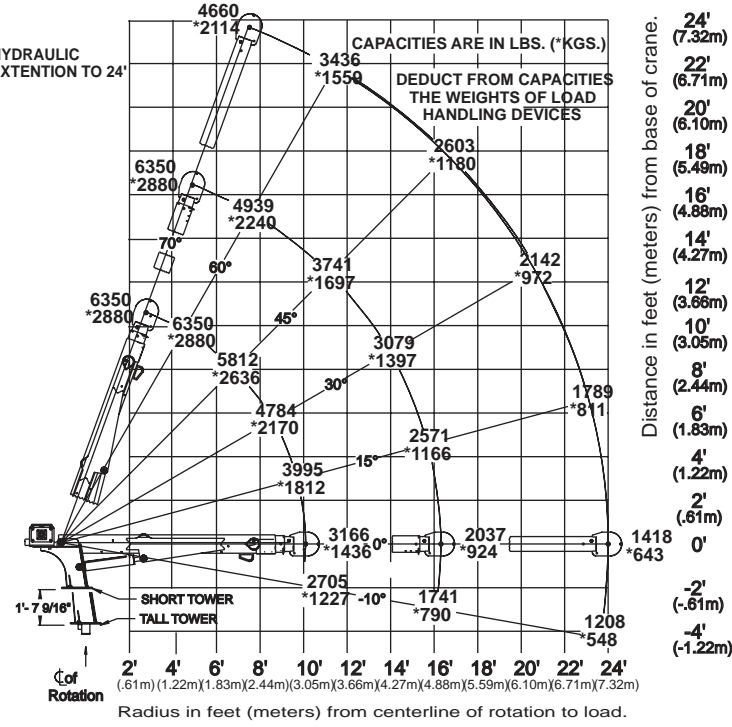


1701 S. 2nd Ave, PO Box 349, Sheldon, IA 51201

For a dealer near you call toll free 800-831-8588, or 712-324-5001, fax 712-324-3526 or www.maintainer.com.

3824 CRANE CAPACITY CHART

38,000 FT/LB
CRANE RATING



Maintainer 1701 S 2ND AVE SHELTON, IA 51201
800-831-8588
WWW.MAINTAINER.COM

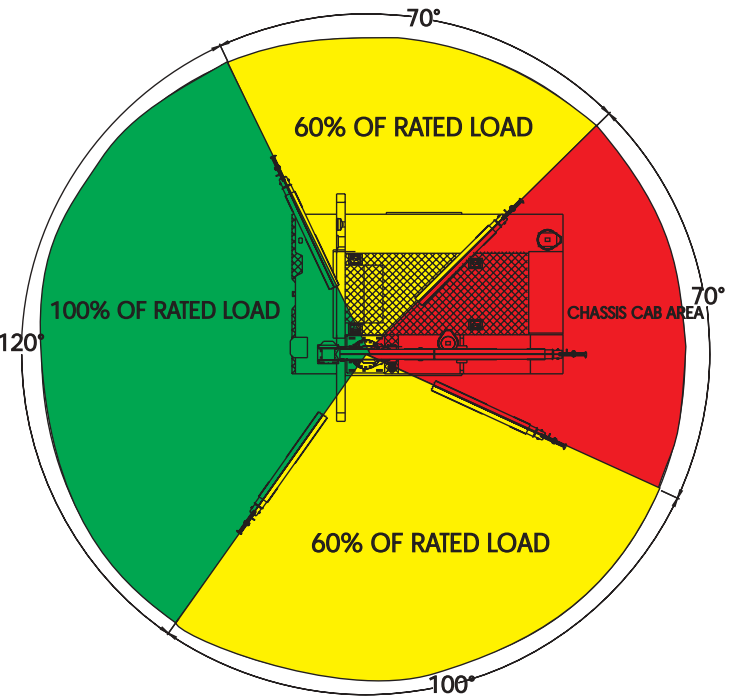
G eneral Crane Performance Specifications:

- 38,000 FT/LB Crane rating
- 6,350 lbs. Maximum lift capacity (2,722 KGS.)
- 600 Degrees of rotation
- Hydraulical boom extension to 24 feet

W inch:

- 38:1 Ratio worm gear winch with brake
- 120 Feet of 5/16" cable
- ANSI winch drum
- Hydraulic, high torque, winch motor
- 40.5:1 Ratio planetary winch with brake (optional)

3824 REDUCED CAPACITY LOAD CHART



USE WHEN EQUIPPED WITH REAR OUTRIGGER PACKAGE ONLY

R otation:

- Turntable slewing ring bearing
- Modular worm drive with spur gear output, 190.4:1 ratio, self-locking
- Hydraulic rotation powered by a high torque motor

C rane Physical Specifications:

- 64" Overall crane height with optional planetary winch (shown)
- Wt. 1875 lbs.
- 22" x 22" Mounting space required
- Mounting requires eight (8) 7/8-9 (GRD - 8) bolts
- Hydraulic requirements: 6-8GPM @3000 PSI