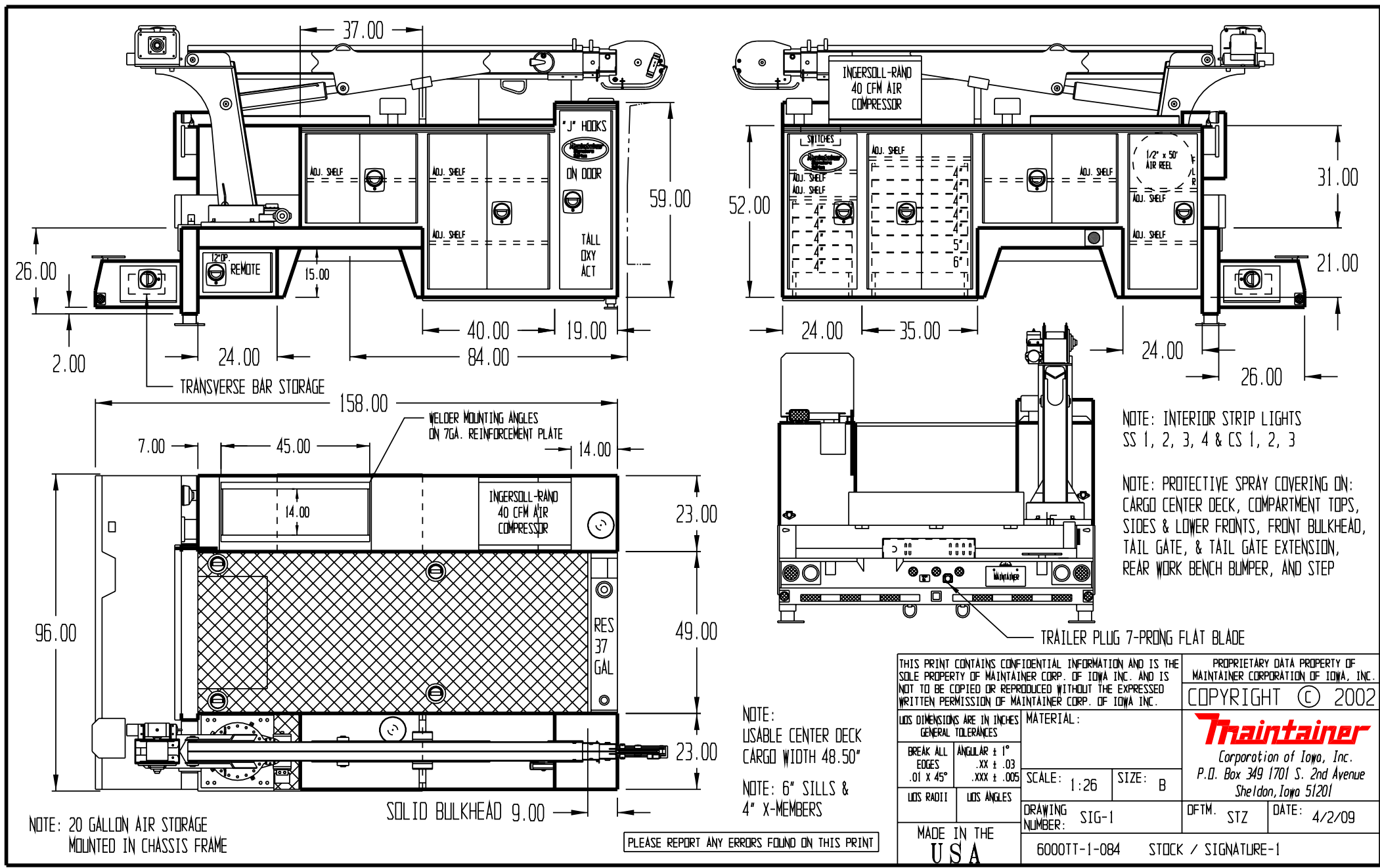


APPROVED BY \_\_\_\_\_

DATE \_\_\_\_\_

PAINT CODE \_\_\_\_\_

Z1 OXFORD WHITE



NOTE: INTERIOR STRIP LIGHTS  
SS 1, 2, 3, 4 & CS 1, 2, 3

NOTE: PROTECTIVE SPRAY COVERING ON:  
CARGO CENTER DECK, COMPARTMENT TOPS,  
SIDES & LOWER FRONTS, FRONT BULKHEAD,  
TAIL GATE, & TAIL GATE EXTENSION,  
REAR WORK BENCH BUMPER, AND STEP

NOTE:  
USABLE CENTER DECK  
CARGO WIDTH 48.50"  
  
NOTE: 6" SILLS &  
4" X-MEMBERS

NOTE: 20 GALLON AIR STORAGE  
MOUNTED IN CHASSIS FRAME

PLEASE REPORT ANY ERRORS FOUND ON THIS PRINT

THIS PRINT CONTAINS CONFIDENTIAL INFORMATION AND IS THE SOLE PROPERTY OF MAINTAINER CORP. OF IOWA INC. AND IS NOT TO BE COPIED OR REPRODUCED WITHOUT THE EXPRESSED WRITTEN PERMISSION OF MAINTAINER CORP. OF IOWA INC.		PROPRIETARY DATA PROPERTY OF MAINTAINER CORPORATION OF IOWA, INC.	
DIMENSIONS ARE IN INCHES GENERAL TOLERANCES		COPYRIGHT © 2002	
BREAK ALL EDGES .01 X 45°	ANGULAR ± 1° .XX ± .03 .XXX ± .005	MATERIAL:	<b>Maintainer</b> Corporation of Iowa, Inc. P.O. Box 349 1701 S. 2nd Avenue Sheldon, Iowa 51201
LOS RADII	LOS ANGLES	SCALE: 1:26	
MADE IN THE USA		DRAWING NUMBER: SIG-1	DFTM. STZ
		6000TT-1-084	DATE: 4/2/09
		STOCK / SIGNATURE-1	