



- Standard Features -

- Galvanized body to resist corrosion including body shell (12 ga), bulkhead, wheel skirting and all exterior sheeting / Aluminum doors (3/16" thick)
- Cabinet floor reinforcement w/ clean-out drains
- Three point D-ring door latches w/ gas shock door holders
- Adjustable shelving package
- 49" Wide center deck overlaid with deck plating
- 10" Swing-down tailgate
- 12" Deep, full body width, step bumper w/ 2" square frame hitch receiver rated at Class IV (1,500 lb vert & 10,000 lb MGTW) and 7-prong flat blade (RV style) trailer plug
- Fuel fill recessed into body side rail (1-ton only)
- body primed, undercoated and includes back-up alarm
- I.C.C. round recessed lights, reflectors, mud flaps and rear body grab handles
- Mini I.C.C. Safety kit - 2 1/2 pound ABC fire extinguisher & hazard reflectors

- 1 MTS-2-084, 59" High X 23" Deep Compartments, 11' Long Body, 12 Ga. body, 54" x 28" wheel well opening / installed on chassis
- 1 Adder for 1 or 2 ton service body "Tall Tower Crane" reinforcement structure of body

NOTE: For individual crane equipment & accessory items ie. adj. boom saddle, outrigger pkgs., body leveling pkgs., hyd. pkgs. to operate a crane or other hyd. drive components - Contact Factory

- 3 Feet of "Standard Compartment" for C-A=120" CA, Compt. S/S& welder deck C/S.
- 1 Compartments to 21" deep W/53" wide center deck.

- Hydraulic Cranes (Tall or Short Tower) -

All cranes include a closed center load sensing hydraulic power package consist of a PTO, CC/LS pump, oil reservoir w/ in-tank filter-vented fill cap - sight gauge - suction screen & ball valve, 33 foot remote control w/ proportional trigger & engine start/stop, hydraulic fully extend boom, anti-two block system, overload protection, holding valves, adjustable boom saddle and body spring leveling package (note if air suspension customer will be required to have chassis OEM to provide dual-control)

- 1 Crane 12,000 lb. max. capacity w/ hydraulic extend hex-boom 12' to 24' w/ 2 - rear hydraulic up/down & 1 - hydraulic out crane side out outrigger
- Note: Recommend 120" C-A minimum (price with per foot body option)

- Chassis Equipment & Accessories -

- 1 PTO for Allison auto transmission in lieu of std manual

- 1 Electronic engine spd. control - computer set - electronic engine
- 1 Exhaust modify on F650 & F750 chassis to not require body notch
- 1 Supply and install PTO hour meter.

- Hydraulic Equipment & Accessories -

- 1 Large oil reservoir in lieu of std

- Compressor Equipment & Accessories -

- 1 Additional air tank - 20 gallon
- 1 Air accessory package - filter / lubricator / regulator
 - 1/2" X 50' spring rewind reel, hose & ball stop
- 1 Hose reel access out rear compartment

- Compartment Equipment & Accessories -

- 1 Oxy/Act bottle storage w/ratchet strap, vents, "J" hks. & re/flr.
- 1 Deck plate overlaid compartments
- 1 Master compartment locking system, spring loaded and padlock guards

- Lighting Equipment & Accessories -

- 1 Exterior 12 v. lighting pkg. (halogen) 1-permanent & 1-remote
- 6 Exterior 12 v. flood light (halogen)
- 8 Interior 12 v. strip light

- Painting Equipment & Accessories -

- 1 Paint body complete - one solid urethane color / List color:
 - Note: Due to variations in OEM paint products and application methods, Maintainer cannot guarantee a perfect paint match on colors or metallic.
 - Note: For metallic or clear coat/base coat paint additional charges will be required and are not included in this quote unless shown
- 1 Line-X protective spray covering - Per Yancey requirement.

- Center Deck Equipment & Accessories -

- 6 Flush mount "D" ring tie-downs in bed floor, each
- 1 Removable divider panel in center deck
- 1 Tailgate extension on C/S 18" tall in lieu of 10" & seal.

- Rear Bumper Equipment & Accessories -

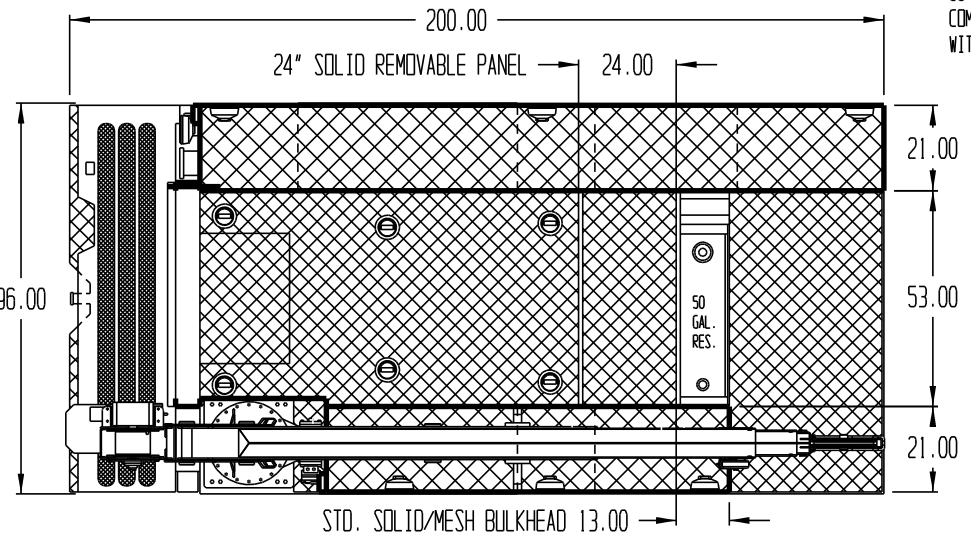
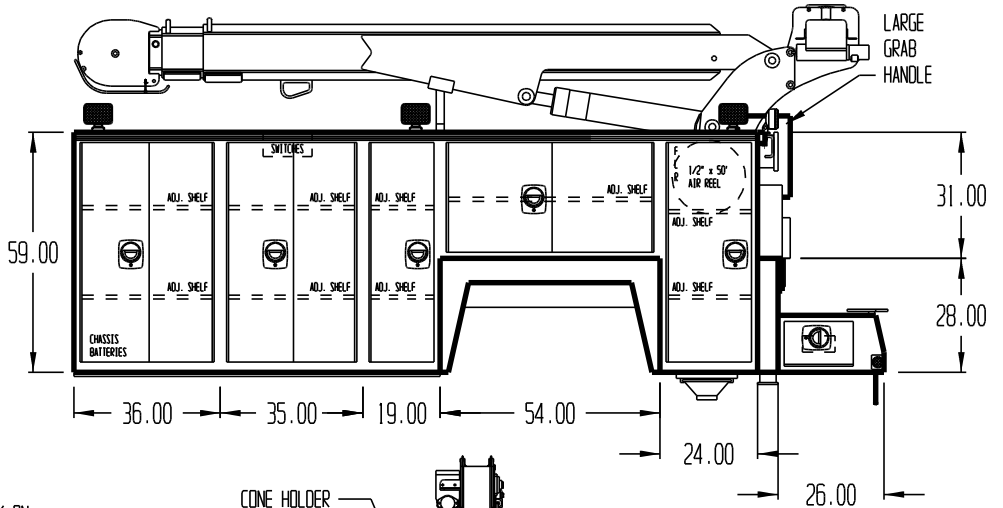
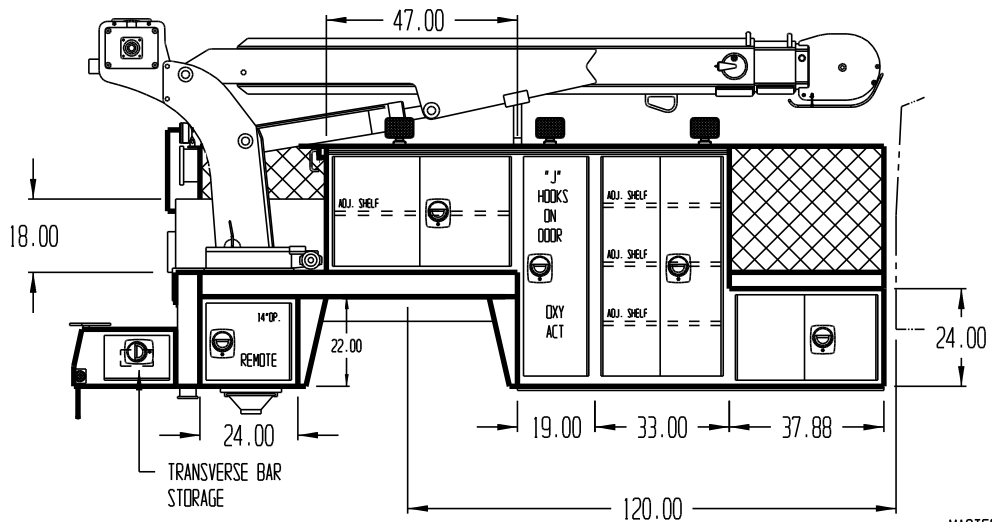
- 1 26" workbench bumper with 2-side storage compartments includes
 - 2" square frame hitch receiver and round recessed tail & marker lights
- 1 Transverse bar storage compt. in workbench bumper

- Miscellaneous Equipment & Accessories -

- 1 Vise / grinder removable mounting plate

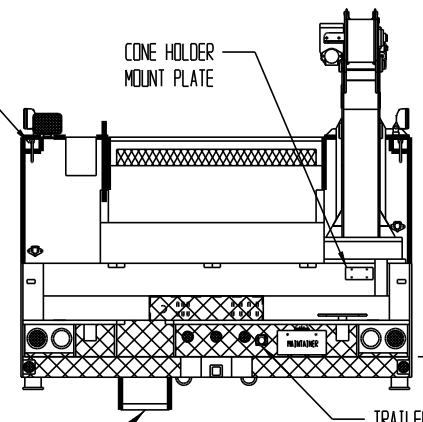
NOTE: 18" TALL EXTENSION PANEL.
SEALED AT THE BOTTOM, TO THE DECK

REVISIONS			
REV.	DESCRIPTION	DATE	APRVD



MASTER LOCK ON
SS & CS REAR
COMPARTMENTS
WITH LOCK GUARD

CONE HOLDER
MOUNT PLATE



NOTE: INTERIOR STRIP LIGHTS
(4) 36" SS 1, 2, 3 & CS 2
(8) 12" (2EA.) SS 4, 5 & CS 1, 4

NOTE: LINE-X FRONT WELDER PLATFORM,
CARGO CENTER DECK, COMPARTMENT TOPS
& SIDES, FRONT BULKHEAD, REMOVABLE PANEL,
AND TAIL GATE EXTENSION
**DO NOT LINE-X: COMPARTMENT BACKS,
TAIL GATE, WORKBENCH BUMPER AND STEP

NOTE:
USABLE CENTER DECK
CARGO WIDTH 52.50"

NOTE: 20 GALLON AIR TANK IN
REAR CHASSIS FRAME

PLEASE REPORT ANY ERRORS FOUND ON THIS PRINT

THIS PRINT CONTAINS CONFIDENTIAL INFORMATION AND IS THE SOLE PROPERTY OF MAINTAINER CORP. OF IOWA INC. AND IS NOT TO BE COPIED OR REPRODUCED WITHOUT THE EXPRESSED WRITTEN PERMISSION OF MAINTAINER CORP. OF IOWA INC.		PROPRIETARY DATA PROPERTY OF MAINTAINER CORPORATION OF IOWA, INC.	
UOS DIMENSIONS ARE IN INCHES GENERAL TOLERANCES		COPYRIGHT © 2000	
BREAK ALL EDGES .01 X 45°	ANGULAR ± 1° .XX ± .03 .XXX ± .005	Thaintainer	
UOS RADIUS	UOS ANGLES	Corporation of Iowa, Inc. P.O. Box 349 1701 S. 2nd Avenue Sheldon, Iowa 51201	
MATERIAL:		SCALE: 1:32	SIZE: B
MADE IN THE USA		DRAWING NUMBER: Y125	DFTM. STZ DATE: 1/15/07
		12000TT-2-120	