

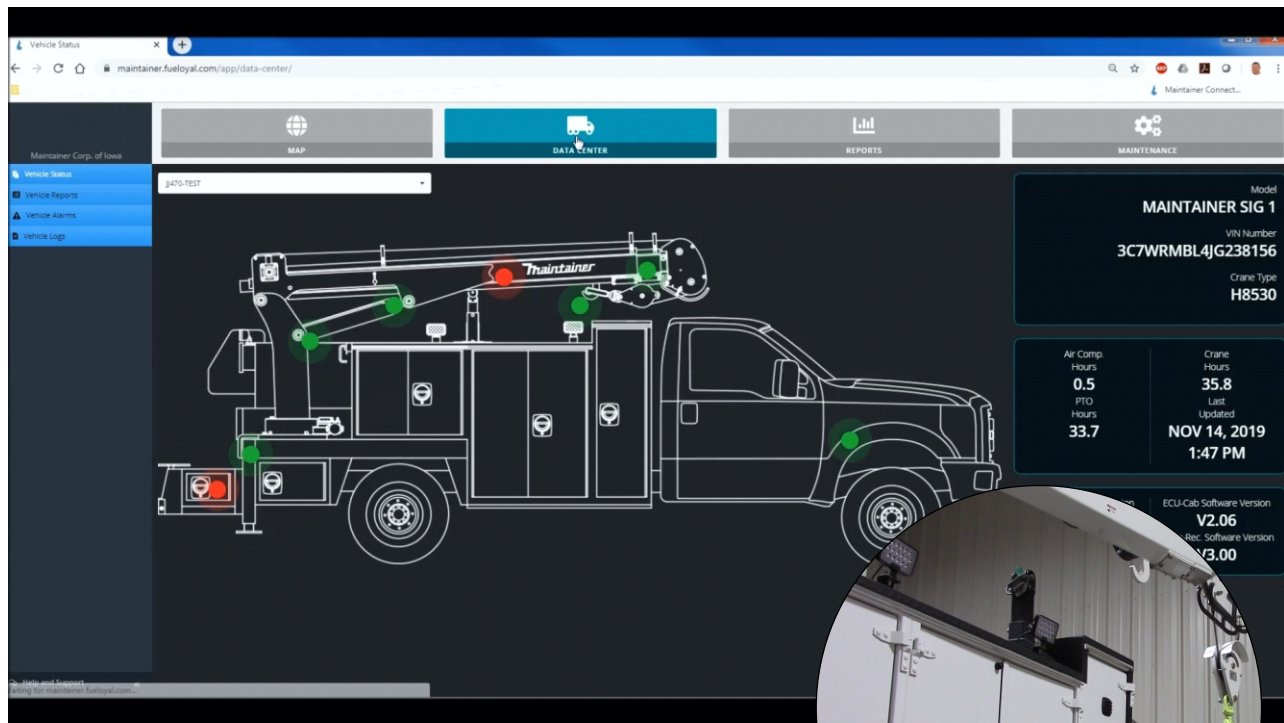


# MAINTAINER CONNECT

NEW

Telematics Platform For Service Trucks

## THE FUTURE IS HERE!



### Connected Vehicles Offer:

- GPS location services
- Monitor for service intervals (air compressor, PTO, hydraulic systems)
- Track crane utilization
- Track outrigger deployment (optional)
- Help troubleshoot remotely

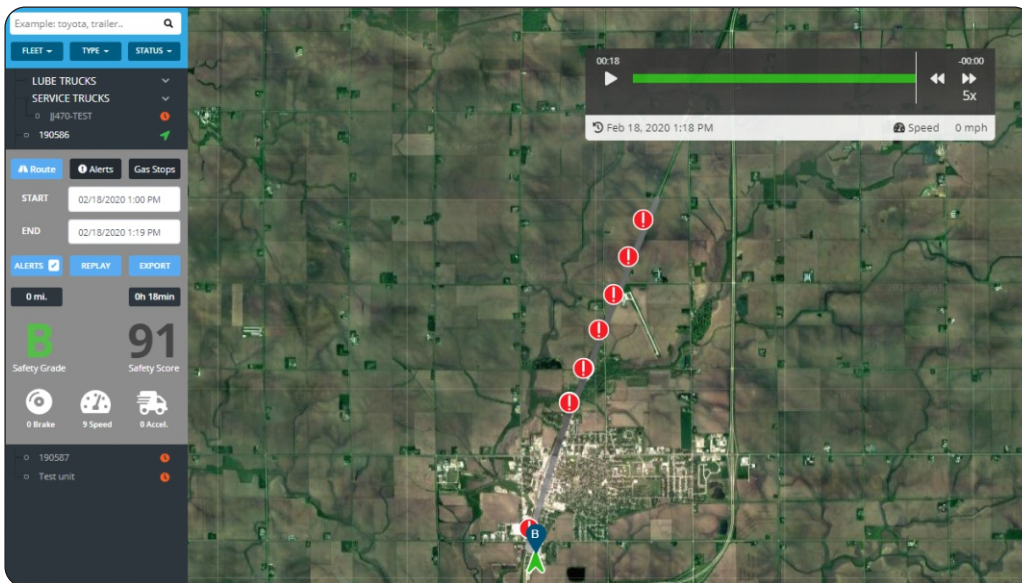
Can integrate with existing chassis telematics platforms like Samsara, Geotab, & Verizon Connect for complete fleet data!

# Maintainer

800-831-8588 | [www.maintainer.com](http://www.maintainer.com)

# Monitor Your Fleet

• SAFETY • EFFICIENCY • PREVENTION



## Current Monitored Features:

- VEHICLE LOCATION
- CRANE HOURS
- PTO HOURS
- AIR COMPRESSOR HOURS
- TRUCK LEVEL
- BATTERY VOLTAGE
- LOAD PERCENTAGE\*
- BOOM LENGTH\*
- BOOM PRESSURE\*
- BOOM ANGLE\*
- BOOM STOWED\*
- OUTRIGGER STOWED\*
- WEIGHT OF LOAD\*
- ANTI-TWO BLOCK
- LOAD RADIUS\*

\*May depend on crane selection

**FIRST YEAR  
ACCESS TO  
DATA IS  
FREE**

with purchase of  
the base module

*Minimum Monthly  
Fee Thereafter*

## Customized For You - Imagine Your Future...

- ✓ Cameras can be mounted on the crane to capture scene footage, gain visibility, and enhance record keeping.
- ✓ Fleet managers can receive alerts along with the operator if potential unsafe conditions exist, or if equipment needs attention.



Spotlight & Camera  
Mounted On Crane Tip



Night Scene View With  
Crane-Mounted Camera

**Tell us what YOU need!**

