

CHARGING STATION

Charge Your Cordless Tools On-Site or Overnight



Showcase Package Includes:

- Inverter - light duty 400 watt pure sine wave
- *Milwaukee* M18 6-battery sequential charger
- Storage rack for 5 tools
- Battery storage bracket
- Auto transfer switch -
for power from inverter or shore power
- Sealed duplex electrical GFCI outlet, 120V
- Sealed electrical 120V male plug

Maintainer Charging Station Options Available:



BATTERY STORAGE



GFCI OUTLET



INVERTER



SHORE POWER

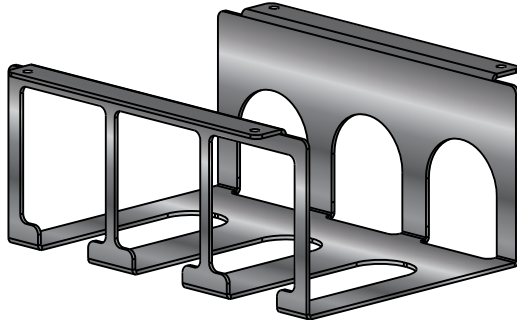
- | | | |
|---|---|---|
| <ul style="list-style-type: none">• Various pure sine wave inverters• Auto-transfer switch, 120V | <ul style="list-style-type: none">• Tool storage racks with up to 12 slots• Battery storage rack | <ul style="list-style-type: none">• Battery charger for <i>Milwaukee</i> or DEWALT tools• Surge Protector |
|---|---|---|

Maintainer

800-831-8588 | maintainer.com

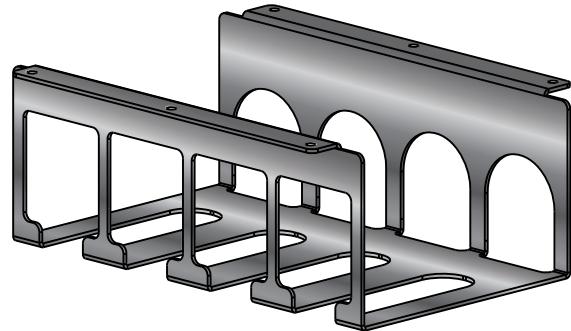
STORAGE RACK OPTIONS

TOOL STORAGE RACK FOR 19" WIDE COMPARTMENT *Item #027213*



3 LARGE TOOLS
Milwaukee 18v or DeWalt 20v

TOOL STORAGE RACK FOR 19" WIDE COMPARTMENT *Item #027212*



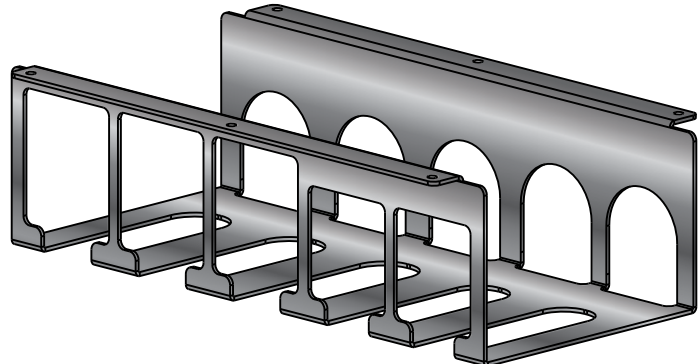
4 SMALL TOOLS
Milwaukee or DeWalt 12v

BATTERY STORAGE RACK *Item #027057*



5 DeWalt 20v or
5 Milwaukee M18 and 4 Milwaukee M12
Can attach to standard Maintainer shelf channels

TOOL STORAGE RACK FOR 24" WIDE COMPARTMENT *Item #027211*



3 LARGE TOOLS & 2 SMALL TOOLS
3 Milwaukee 18v or DeWalt 20v & 2 Milwaukee or DeWalt 12v

NOTE: *Tool storage racks attach below a shelf - shelf not included*

OTHER CHARGING STATION ELEMENTS

#026934 - 400w light-duty inverter, pure sine wave

#A0-04019 - Milwaukee M18/6-battery sequential charger 48-59-1806

#A0-04020 - DeWalt 20v 4-battery charger DCB104

#A0-00207 - Sealed duplex electrical GFCI outlet, 120v, installed & wired to power source

#A0-50727 - Sealed electric 120v male plug, installed & wired to component

#A0-04023 - Auto-transfer switch, 120v for dual power sources

