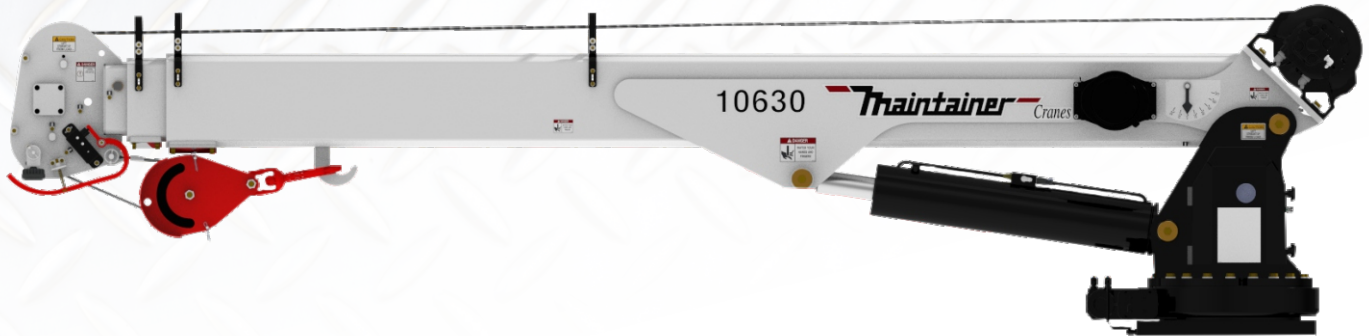




HYDRAULIC CRANES

Models 10625 & 10630



Maintainer cranes are designed to perform reliably even in the harshest conditions

Featuring: LED boom-tip floodlights, an enclosed sealed rotation bearing, a low-profile boom tip sheave head, boom tip accessory mounting plates, a hinged protective valve cover, enhanced protective valve coatings for corrosion resistance, sealed rubber-booted solenoid push buttons, a sealed crane turret, and more. These advanced features ensure durability and smooth operation for your toughest jobs.



Advanced Crane Control 2.1

STANDARD on all hydraulic cranes 65620 and larger

- Live weight display is on remote control and on the display screens in compartment
- Automatic capacity & speed limiting in low stability lifting areas by sensing truck level and boom angle
- Automatic stability monitoring reduces operator error
- Reduces rotation speed under heavy load or long extensions for improved operational control
- Will warn the operator and stop crane rotation if necessary

Pistol Grip Wireless Remote

STANDARD on all hydraulic cranes

- 35' Backup cable
- Toggle switch controls
- Large LED display screen
- Vibration alerts
- Charging docking station with spare battery
- Engine start/stop, speed control, and a/c controls



STANDARD FEATURES

10,000 Lb. Lift Capacity

(10625) Max. Reach 25' - (10630) Max. Reach 30'

Hexagonal Boom

Boom Mounted Planetary Winch

Counterbalance Valves On Extend & Lift Cylinders

(2) LED Boom Tip Lights



Advanced Crane Control 2.2

OPTIONAL on all hydraulic cranes 65620 and larger

- Automatic Stability Zone Charts - The system knows the position of the crane and will automatically reduce the maximum capacity of the crane.
- Rotate Stow Assist - As you stow the crane, you can hold the rotate button full speed, but the crane will stop and center itself over the boom saddle. As you then boom down, the crane will slow itself as it nears the saddle.
- Body Collision Prevention - You won't accidentally run your crane into your own truck body or chassis exhaust stack. The system will stop crane from rotating or booming down through these areas!

SPECIFICATIONS - 10625 & 10630

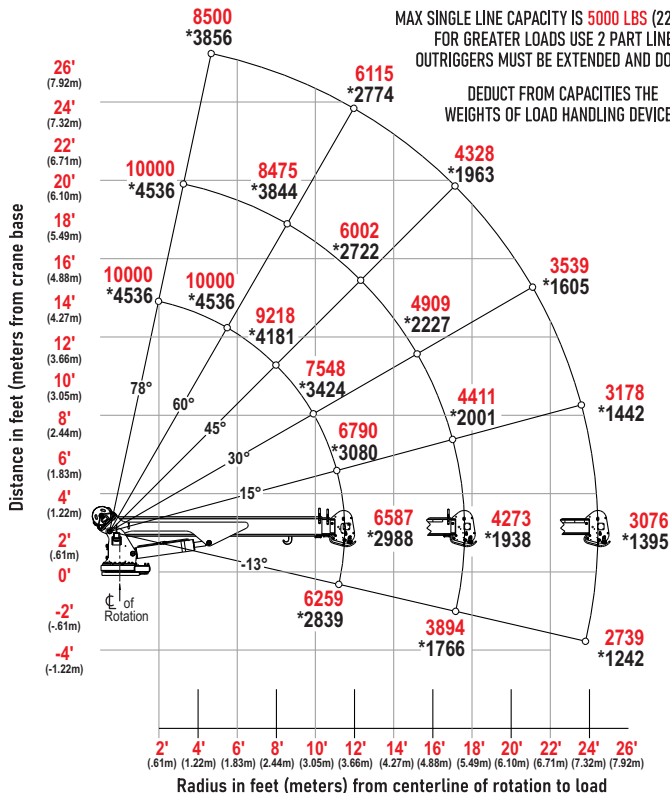
10625 CRANE CAPACITY CHART | 75,000 FT*LB CRANE RATING

HYDRAULIC
EXTENSION TO 25'

CAPACITIES ARE
IN LBS. (*KGS.)

WIRE ROPE: ϕ 3/8 NON-ROTATION RESISTANT
17,500 LBS (7938 KG) MIN BREAKING FORCE
MAX SINGLE LINE CAPACITY IS 5000 LBS (2268 KG)
FOR GREATER LOADS USE 2 PART LINE
OUTRIGGERS MUST BE EXTENDED AND DOWN

DEDUCT FROM CAPACITIES THE
WEIGHTS OF LOAD HANDLING DEVICES



Crane Rating

75,000 ft-lb

Retracted
Boom Length

10625: 10' from
center line of crane
10630: 13' from
center line of crane

Boom Extension

Two stage 100% Hydraulic

Maximum
Horizontal Reach

10625: 25'
10630: 30'

Maximum
Vertical Lift

10625: 27' 3"
10630: 32'

Lifting Capacity

10,000 lbs @ 6'
10625: 3,076 lbs @ 25'
10630: 2,552 lbs @ 30'

Boom Elevation

-13° to 78°

Stowed Height

3' 6"

Mounting Space
Required

23" x 30"

Bolt Hole Pattern

14.75" x 14.75"

Approximate
Crane Weight

10625: 2,436 lbs
10630: 2,650 lbs

Winch:
Rope Diameter

ϕ 3/8" x 140'

Winch: Line
Pull Speed

55' ft/min

Winch: Maximum
Single Part Line

5,000 lbs

Winch: Maximum
Double Part Line

10,000 lbs

Rotation

400°

Power Supply
Req. PTO & Pump

11 GPM @ 3,000 psi

Min Chassis GVWR

26,000#

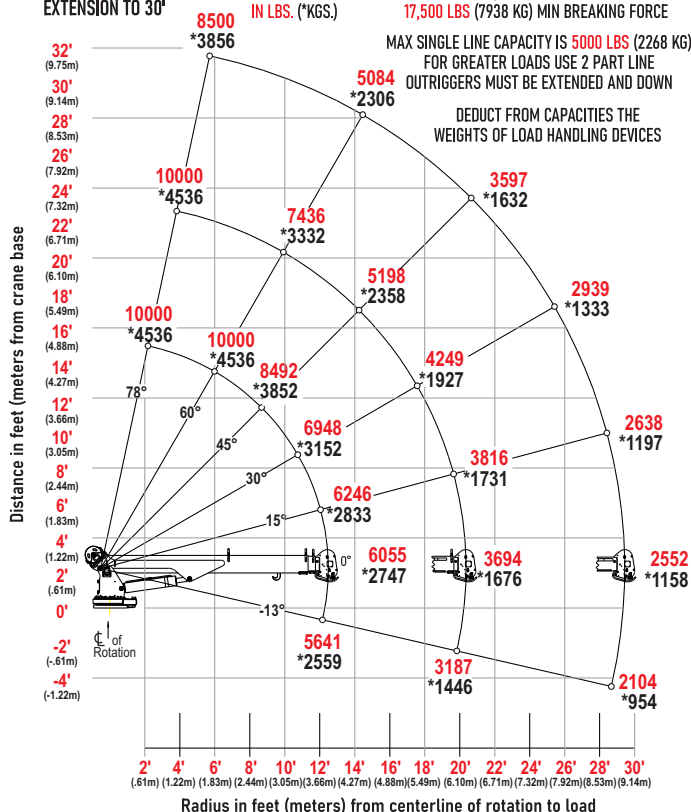
10630 CRANE CAPACITY CHART | 75,000 FT*LB CRANE RATING

HYDRAULIC
EXTENSION TO 30'

CAPACITIES ARE
IN LBS. (*KGS.)

WIRE ROPE: ϕ 3/8 NON-ROTATION RESISTANT
17,500 LBS (7938 KG) MIN BREAKING FORCE
MAX SINGLE LINE CAPACITY IS 5000 LBS (2268 KG)
FOR GREATER LOADS USE 2 PART LINE
OUTRIGGERS MUST BE EXTENDED AND DOWN

DEDUCT FROM CAPACITIES THE
WEIGHTS OF LOAD HANDLING DEVICES



Maintainer
1701 2nd Ave - Sheldon, IA 51201
maintainer.com
800-831-8588