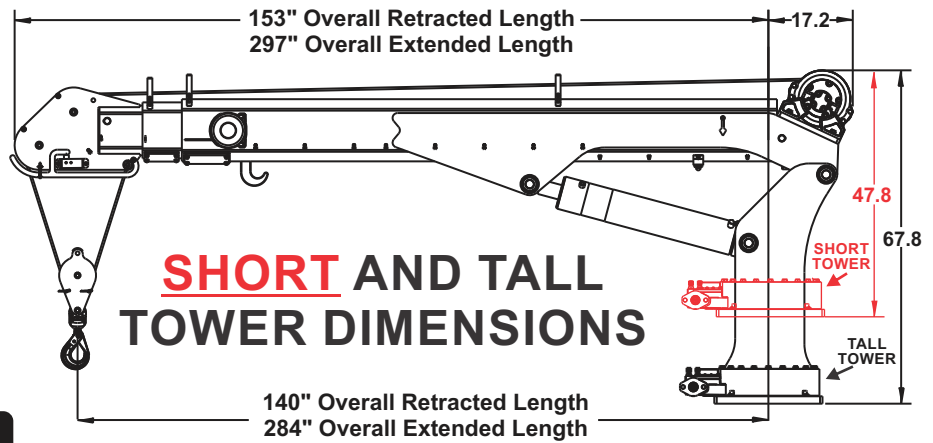




**Mainstainer**

**H10025 CRANE**

# specifications



## specifications

- 2371 lbs. (998 KGS)
- 22" x 22" Mounting Space Required
- Mounting requires (8) 7/8-9 (GRD-8) bolts
- Hydraulic Requirements: 10-12 GPM@3000 PSI



## ratings

## features

- 10,000 lb. max. capacity
- 75,000 ft-lb capacity
- 25' hydraulic reach
- Advanced Crane Control- standard
- Boom-Mounted planetary winch
- Dual part line standard - single part capable
- Total operational range 91° (-13 to +78)
- Low profile double sheave design
- Anti-Two block relocation (*left side*)
- User-Friendly load block storage
- 140' of 3/8" diameter wire rope
- 615° of rotation
- Hexagonal boom
- Wireless remote - standard
- Tall and short tower configurations
- Closed-center/load sensing hydraulic system (*open center optional*)
- OSHA 1910.180/ANSI B30.5 compliant



## H10025 CRANE CAPACITY CHART 75,000 FT\*LB CRANE RATING

HYDRAULIC EXTENSION TO 24' 9"

CAPACITIES ARE IN LBS. (\*KGS.)

MAX SINGLE LINE CAPACITY IS 5000 LBS (2268 KG)  
FOR GREATER LOADS USE 2 PART LINE  
OUTRIGGERS MUST BE EXTENDED AND DOWN

DEDUCT FROM CAPACITIES  
THE WEIGHTS OF LOAD  
HANDLING DEVICES

