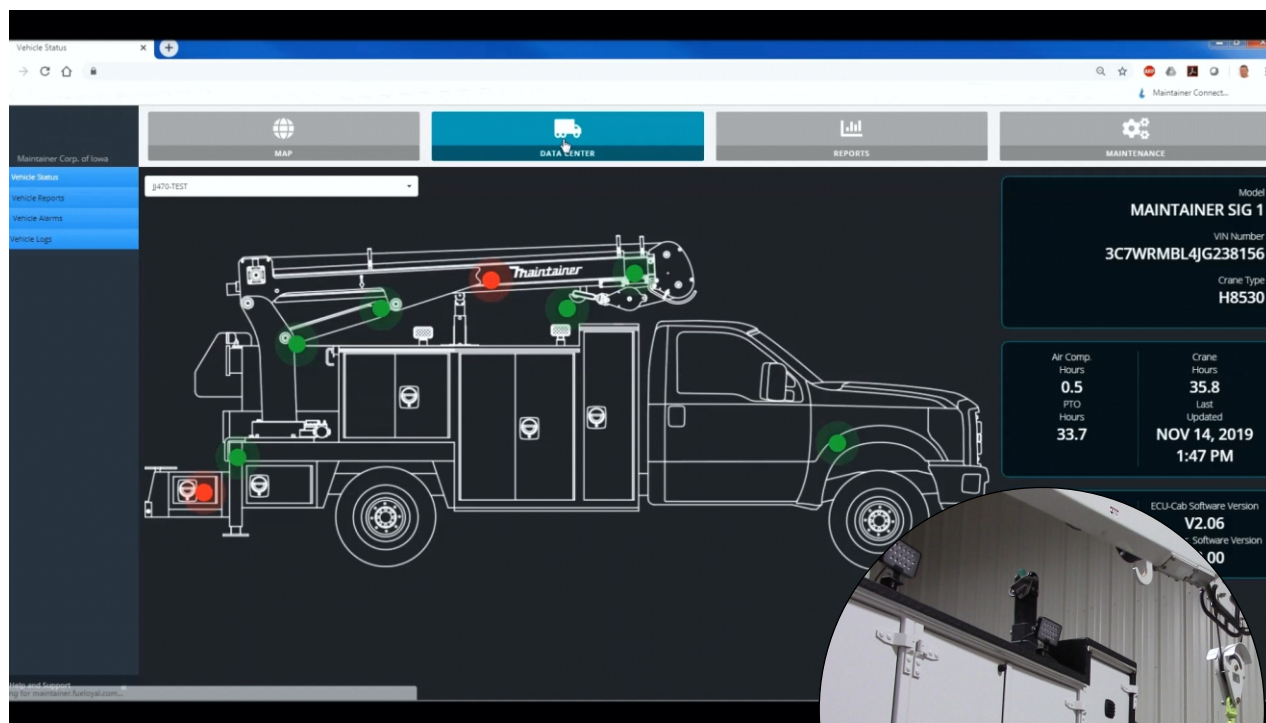




MAINTAINER CONNECT

Telematics Platform For Service Trucks

THE FUTURE IS HERE!



Connected Vehicles Offer:

- GPS location services
- Monitor for service intervals (air compressor, PTO, hydraulic systems)
- Track crane utilization
- Track outrigger deployment (optional)
- Help troubleshoot remotely

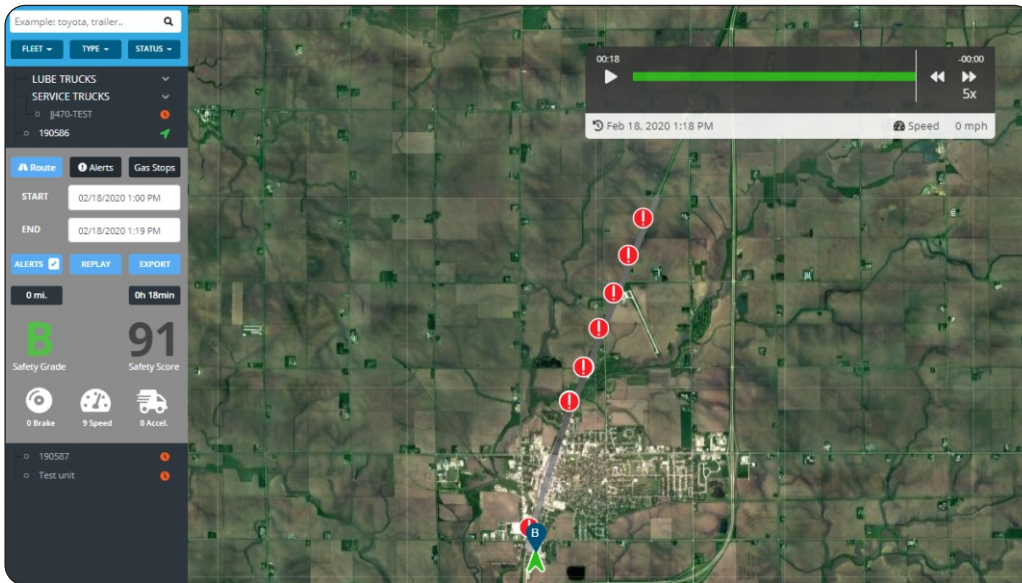
Can integrate with existing chassis telematics platforms like Samsara, Geotab, & Verizon Connect for complete fleet data!

Maintainer

800-831-8588 | www.maintainer.com

Monitor Your Fleet

• SAFETY • EFFICIENCY • PREVENTION



Current Monitored Features:

- VEHICLE LOCATION
- CRANE HOURS
- PTO HOURS
- AIR COMPRESSOR HOURS
- TRUCK LEVEL
- BATTERY VOLTAGE
- LOAD PERCENTAGE*
- BOOM LENGTH*
- BOOM PRESSURE*
- BOOM ANGLE*
- BOOM STOWED*
- OUTRIGGER STOWED*
- WEIGHT OF LOAD*
- ANTI-TWO BLOCK
- LOAD RADIUS*

*May depend on crane selection

✓ **Fleet managers can receive alerts along with the operator if potential unsafe conditions exist, or if equipment needs attention**

We continue to develop more process monitoring. Integration with major APU's (VMAC, EnPak) will be online soon!

**FIRST YEAR
ACCESS TO
DATA IS
FREE**

**with purchase of
the base module**

**Minimum Monthly
Fee Thereafter**

See our videos on our website and YouTube Channel

WWW. **Thaintainer**.com

SCAN & VISIT
OUR WEBSITE

