

# H10030 CRANE

AVAILABLE IN SHORT AND TALL TOWER CONFIGURATIONS



MODEL	TYPE	Crane Rating (ft*lb)	REACH	Max Lift (lbs)	BOOM ELEVATION
H10030	Hydraulic	60,000	30'	10,000	-13° +78°

# Maintainer

800-831-8588 | [www.maintainer.com](http://www.maintainer.com)

# specifications



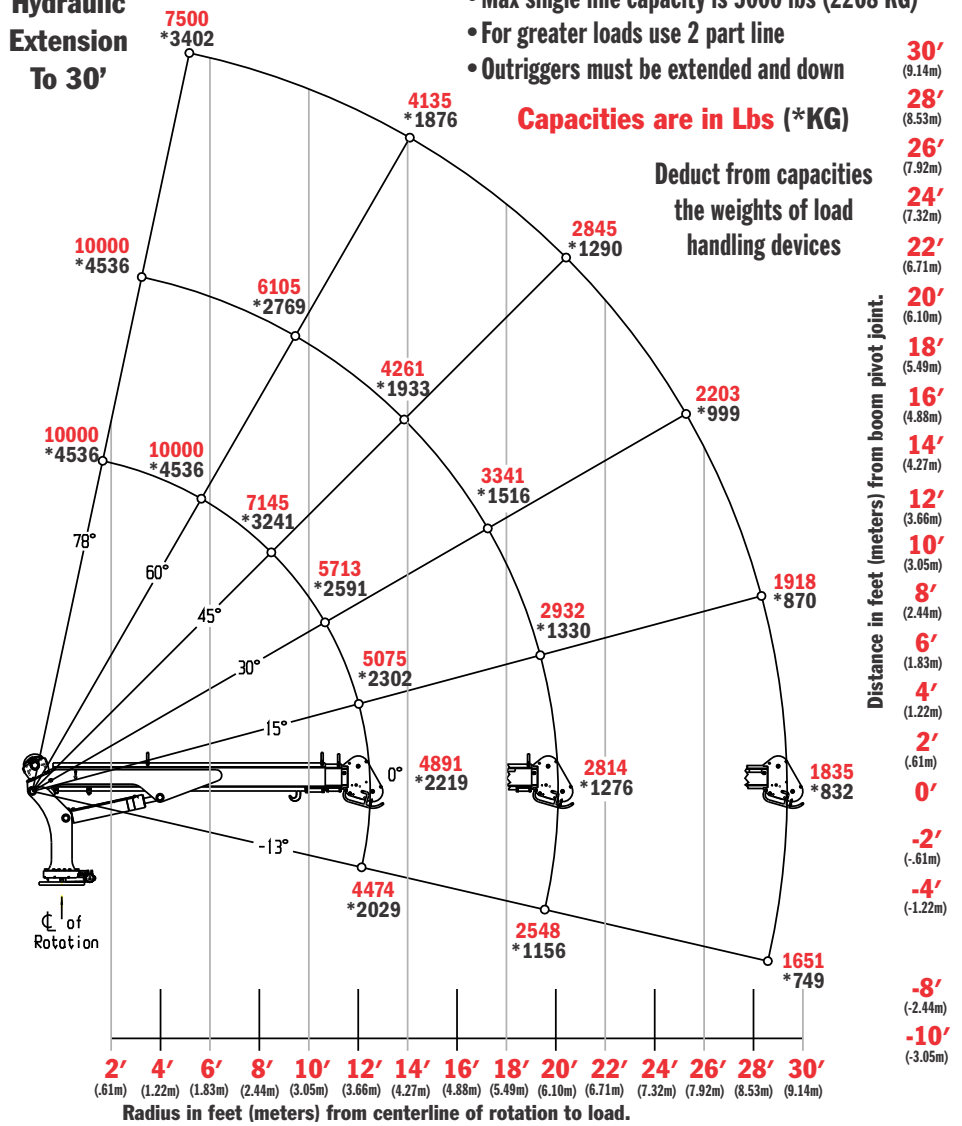
## H10030 CRANE CAPACITY CHART | 60,000 FT\*LB CRANE RATING

Hydraulic Extension To 30'

- Max single line capacity is 5000 lbs (2268 KG)
- For greater loads use 2 part line
- Outriggers must be extended and down

Capacities are in Lbs (\*KG)

Deduct from capacities the weights of load handling devices



- 2390 lbs. (1084 KGS)
- 22" x 22" Mounting Space Required
- Mounting requires (8) 7/8-9 (GRD-8) bolts
- Hydraulic Requirements: 10-12 GPM@3000 PSI



## features

- 10,000 lb. max. capacity
- 60,000 ft-lb capacity
- 30' hydraulic reach
- Advanced Crane Control - standard
- Boom-Mounted planetary winch
- Dual part line standard - single part capable
- Total operational range 91° (-13 to +78)
- Low profile double sheave design
- Anti-Two block reel located on left side
- User-friendly load block storage
- 140' of 3/8" diameter wire rope
- 615° of rotation
- Hexagonal boom
- Wireless remote - standard
- Tall and short tower configurations
- Closed-center/load sensing hydraulic system (open center optional)
- OSHA 1910.180/ANSI B30.5 compliant

